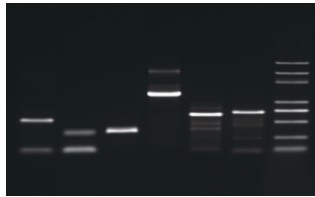


Performance for Crude Samples

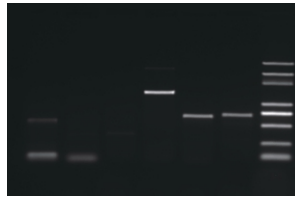
Power Taq PCR 2 X Master Mix

Soil Rice Mouse
1 2 3 4 5 6



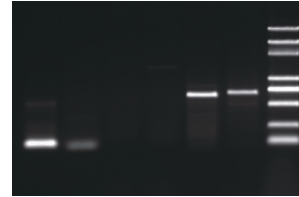
Vendor A

Soil Rice Mouse
1 2 3 4 5 6



Vendor B

Soil Rice Mouse
1 2 3 4 5 6

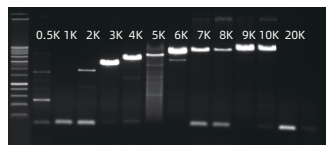


PCR detection of crude extracts from soil, rice and mouse tail

Conclusion: **Power Taq PCR 2 X Master Mix** is superior to other competitors on the performance of crude samples amplification.

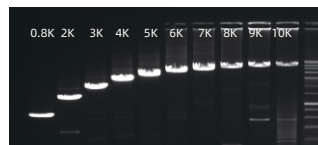
Long Fragments Amplification

Human gDNA

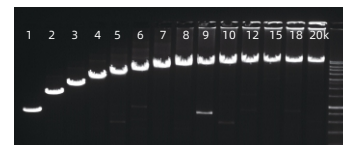


Power Taq PCR 2 X Master Mix

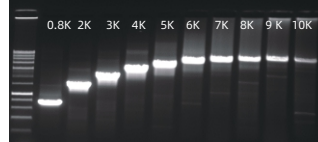
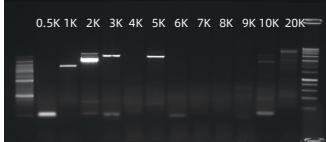
PBC4 plasmid DNA



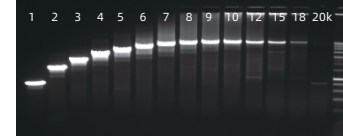
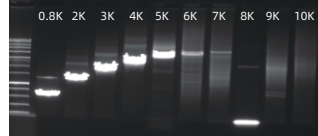
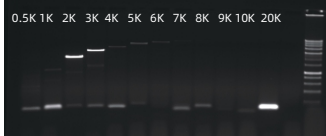
Lamda DNA



Vendor A



Vendor B



Conclusion: **Power Taq PCR 2 X Master Mix** can amplify Human gDNA up to 10Kb, PBC4 (plasmid) DNA up to 10Kb, and Lambda DNA up to 20Kb. AMPLIBIOTHERM 2X PCR Mix has the best performance on the long fragments amplification over other competitors.

GC Content Compatibility

Amplibiotherm PCR 2 X Master Mix

27% 47% 62% 76%

Vendor A

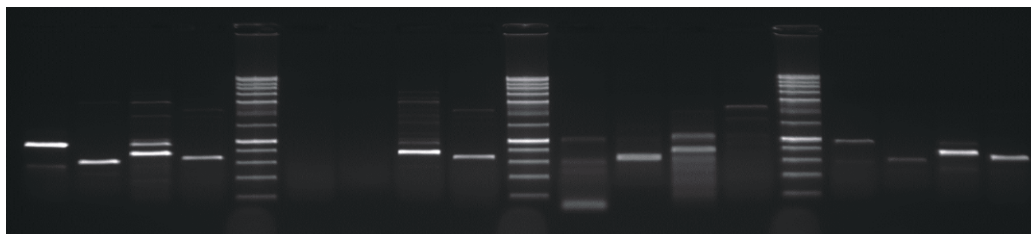
27% 47% 62% 76%

Vendor B

27% 47% 62% 76%

Vendor C

27% 47% 62% 76%



Using Amplibiotherm PCR 2 X Master Mix and competitor products to amplify four target genes with different GC content (27%, 47%, 62%, 76%). Conclusion: Amplibiotherm PCR 2 X Master Mix has a better amplification success rate and yield than competing products.

Distributed by: